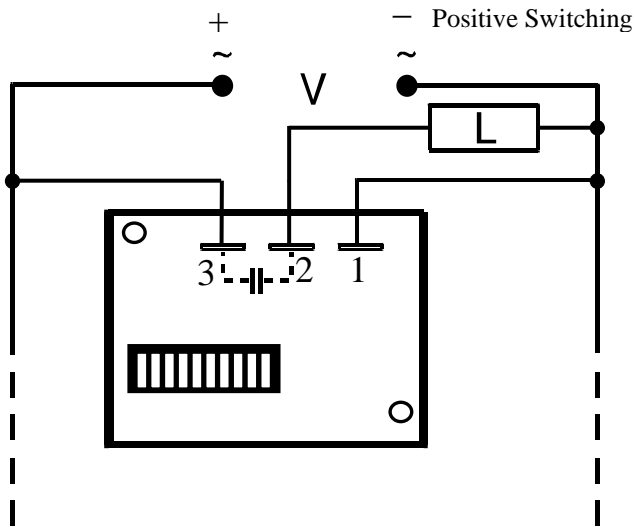




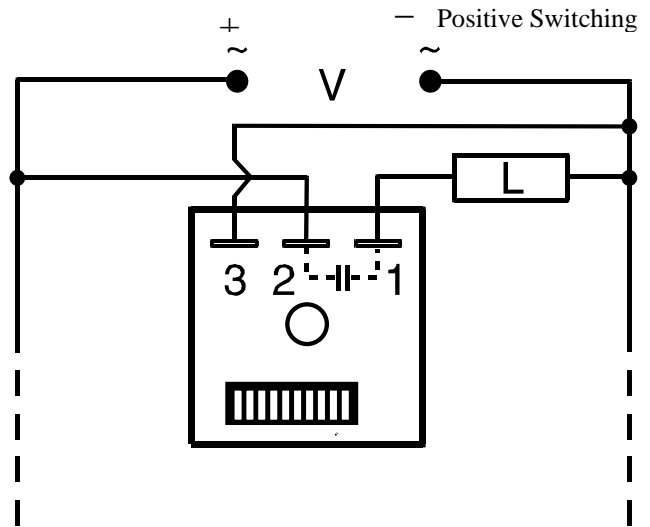
**SSAC Product Line Conversion Notification September 15, 2005**  
**TDUI Series Part Numbers**

**Important Differences Between Product Designs**

Specification	Pre 2005 Design	2005 Generation II Design
<b>Time Delay</b>		
Range	0.1 s ... 10230 s in 3 adjustable ranges	0.1 s ... 102.3 m in 3 adjustable ranges
Tolerance (Factory Calibration)	+/-10 %	≤ +/-5%
<b>Mechanical</b>		
Mounting	Surface mount with two #8 (M4 x 0.7) screw	Surface mount with one #10 (M5 x 0.8) screw
Package	2.5 x 3.5 x 1.22 in. (63.5 x 88.9 x 31 mm)	2 x 2 x 1.21 in. (50.8 x 50.8 x 30.7 mm)
Connection	Input Voltage T3, T1; Output T2	Input Voltage T3, T2; Output T1
<b>Environmental</b>		
Weight	≅ 4.8 oz (136 g)	≅ 2.4 oz (68 g)



Pre 2005 Design



2005 Generation II Design

**Legend**

- V = Input voltage
- L = Time delayed load
- RT = External Adjustment Potentiometer(s)
- UTL = Optional Untimed Load
- Dashed lines are internal connections